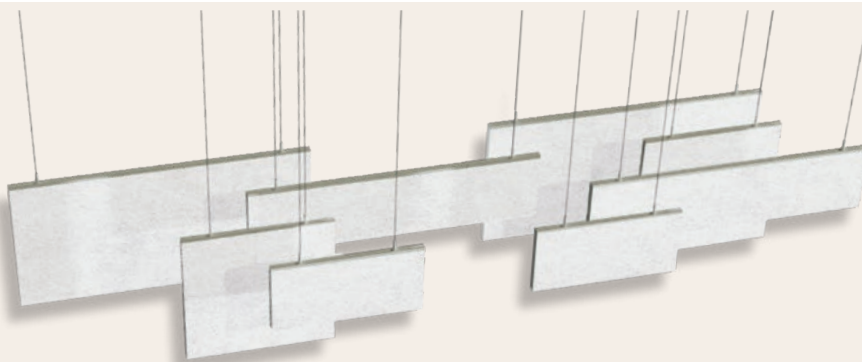


INSTALLATION INSTRUCTIONS

for Troldekt® baffles

TROLDTEKT® BAFFLES

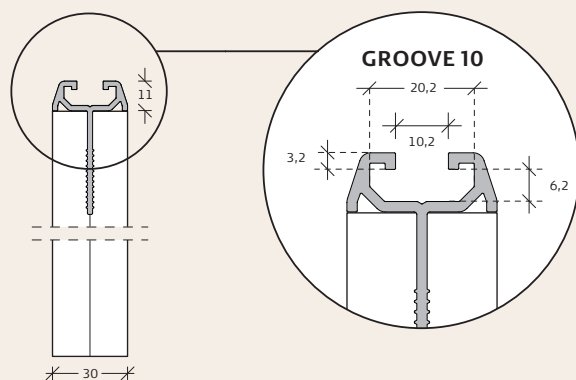


INSPECTION ON RECEIPT

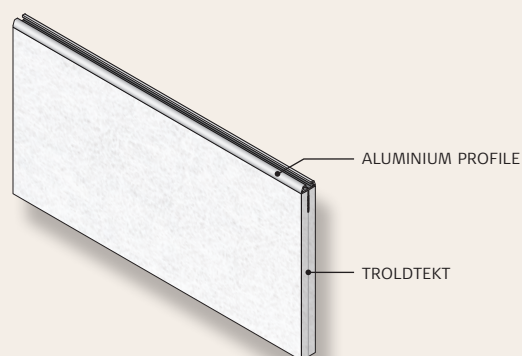
Upon receipt of the goods, check that the following components are complete and free from damage. Complain immediately in the event of recognisable faults and defects. Complaints can no longer be taken into account when the baffles are mounted.

Please also read the instructions for storage and acclimatisation, as well as maintenance and care of Troldekt acoustic panels. These can be downloaded from www.troldekt.com.

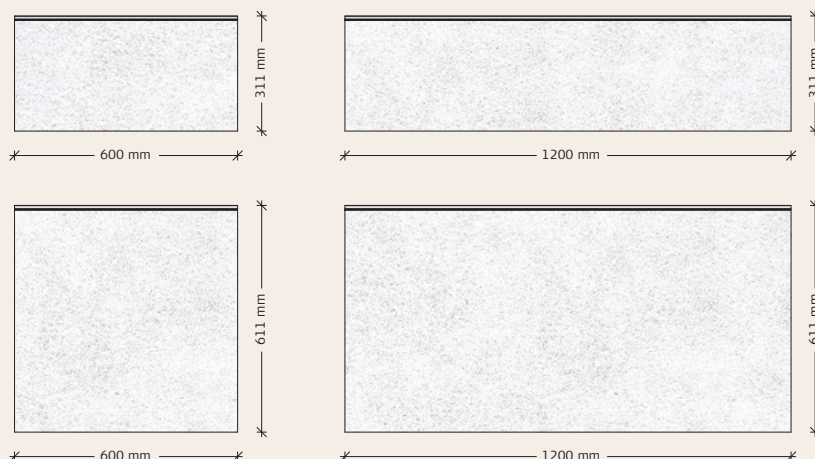
CROSS SECTION



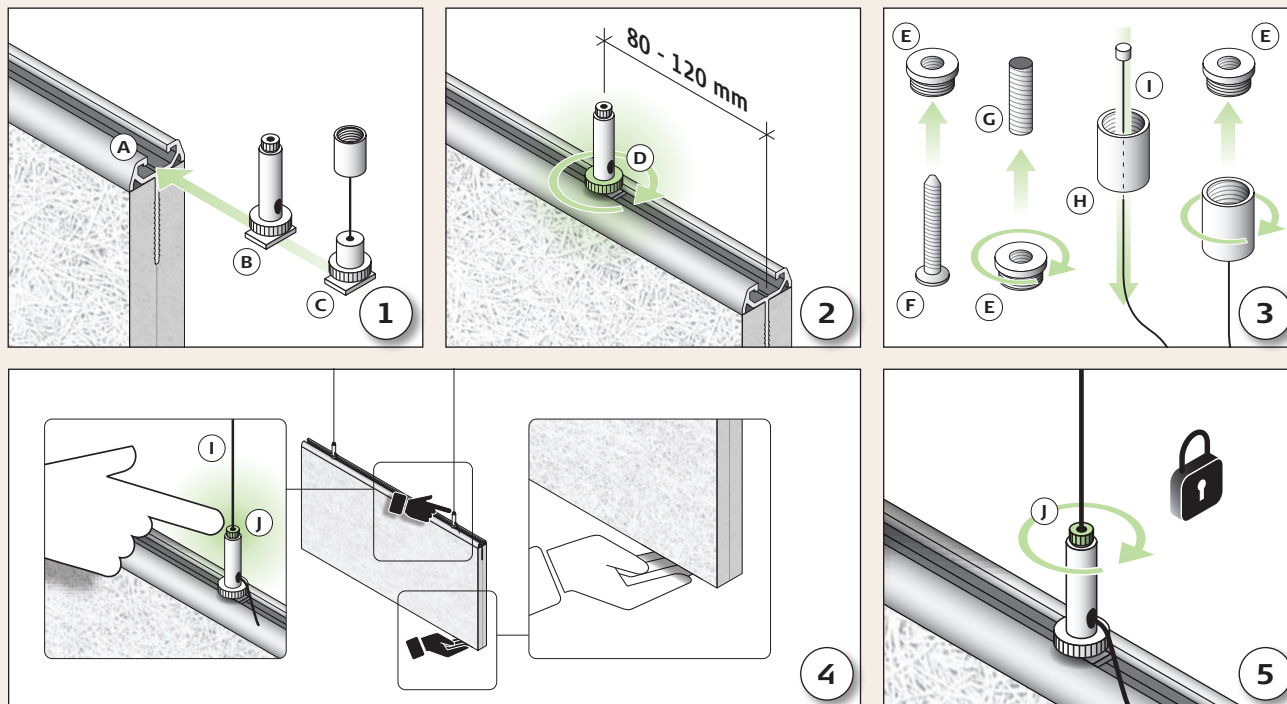
ISOMETRY



FORMATS

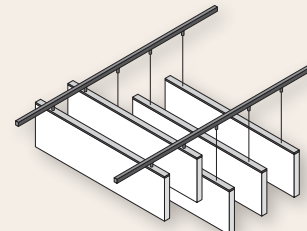
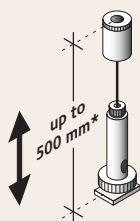
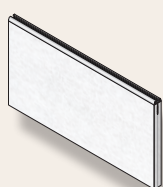


INSTALLATION OF TROLDTEKT® BAFFLES



1. Inserting the wire rope holder: Slide one wire rope holder; short version (C) or height-adjustable version (B) at the side into the rail at both ends of the aluminium profile (A). Please note: For installation with a length of more than 1800 mm, 3 wire rope holders/hangers are required.
2. Fixing the wire rope holder: The distance between the wire rope holder and the outer edge of the baffle must be 100 ± 20 mm. Fix the wire rope holder by tightening the knurled nut (D).
3. Mounting the ceiling fastener: The ceiling fastener consists of an upper and a lower part. The upper part of the ceiling base (E) can be securely anchored to the raw ceiling with either a suitable screw (F) or an M6 external thread (standard thread) (G). Make sure that the mounting points of the ceiling base are aligned vertically with the mounting points of the wire rope holder on the baffle. Then screw the lower part (H) with the wire rope (I) inserted on the upper part (E) anchored in the ceiling. Dowels or screws are not included in the scope of delivery.
4. Aligning the baffle: Guide the wire ropes (I) into the wire rope holders. Adjust the desired end height of the baffle using the adjustment knob (J) of the wire rope holders. Relieve the load on the brackets each time you adjust the height.
5. Once the final position is reached, secure it by tightening the locking screw on the adjustment knob (J).

COMPONENTS



Description of item	Troldekt® baffle	Wire rope hanger, adjustable With wire rope * / up to 500mm and 1m on request	Wire rope hanger, short (50 mm)
Size/length (mm)	300 X 600/1200 mm, 600 X 600/1200 mm (Other sizes on request)	2 pcs per baffle (3 pcs. for length > 1800 mm)	2 pcs per baffle (3 pcs. for length > 1800 mm)

Alternative mounting methods including solutions with ceiling rails, see separate **Inspiration brochure.**



This document reflects Troldekt's current knowledge of certifications, standards and products at the time of publication.

No rights can be derived from this document.
Changes as well as typographical and printing errors reserved.

You can find the latest version online by scanning the QR code.

NOVEMBER 2025 EN V01

Troldekt Limited
Pembroke
Leominster
Herefordshire
HR6 9LA
T: +44 7496681040
sales@troldekt.co.uk
www.troldekt.co.uk

Troldekt A/S
Sletvej 2A
DK - 8310 Tranbjerg J
T: +45 8747 8100
info@troldekt.dk
www.troldekt.dk